

Solo travel Map

YAMANASHI Isawa Guide



Isawa Onsen Station

Footbath(Ashiyu)
A footbath place by the station where travelers can pop in while waiting for a train, after a long walk or when they just want to have a rest.

Crystallized quartz
Yamanashi is famous as a town of crystallized quartz and other gemstones.

Shingenmochi
Yamanashi's most typical Japanese sweet. The delicious combination of Kinako(roasted soy bean flour) and brown sugar syrup is very popular.

Souvenir information
In addition to Wakamiya and Fujimiya, there are also other souvenir shops at inns, hotels and shopping centers where visitors can buy souvenirs.

Hoto
Various types of easy to prepare Hoto sets are on sale.

Cosmetics
Japanese cosmetics are known for their high quality and skin friendliness. Many of them are also made with natural ingredients.

Wine
There are many wineries in Yamanashi where visitors can enjoy wide varieties of wine.

Inden
Traditional craft works made of lacquered steel etc. Several types of inden products, such as wallets and spectacle cases, are available.

Information on bus services from the station

- Fujiyuko Bus
→ To Fuji Kawaguchiko (Lake Kawaguchi)
The bus to Mount Fuji.
- Yamanashi Kotsu Bus
→ To Yumura-Onsen & Kofu
Please take this bus to the town of Kofu.

Please contact us for more information.
<http://www.yamanashi-kankou.jp/bus/>

Enlarged map of the area around the station



Daizokyoji Temple and the night view of Mt. Fuji and Isawa hot-spring resort from its viewing platform.

A majestic temple that possesses many cultural assets. It also has a garden and a Japanese rock garden tourists can't afford to miss. The view of Mt. Fuji and Isawa hot-spring resort from the viewing platform is absolutely gorgeous.

Guiding notation

- Hot spring inn/hotel
- Gas station
- Japanese Restaurant (Izakaya/Bar)
- Information office
- Shop that sells souvenirs
- Taxi company
- Winery
- Coffee & Restaurant
- Footbath(Ashiyu) / Stop-over bath house
- Drugstore
- Bank
- Temple
- Shrine
- Hospital
- Amusement place
- Rental cycle(yu-yu)

Shohonzan Daizokyoji Temple
To Enzan city

Isawa Onsen Station
To Shinjuku Station

Hattake Shoin
A former residence of Hattta, Shingen Takeda's retainer, who was said to be the strongest warrior ever. The garden boasts its beautiful seasonal flowers.

Yamanashi local dishes
Sashimi of horse meat
Basashi (Horse meat)
Sushi
Ramen
Hoto

Koshu Wine

Shops open at night

- Yatai Ramen 屋台ラーメン
open 22:00 - close 4:00
TEL +81-55-262-8688
- Country dishes Kakantai 田舎料理 古今亭
open 11:00 - close 14:00 (Lunch)
open 18:00 - close 2:00 (Dinner)
TEL +81-55-262-2627
- Pub Rainbow スタックレインボー
open 19:00 - close 25:00
TEL +81-55-263-2967
- Karaoke Izakaya Jun (Bar) カラオケ居酒屋 潤
open 19:30 - close 6:00
TEL +81-55-267-6432
- Ramen Masa ラーメン ます
open 19:00 - close 24:30
TEL +81-55-263-7852
- Pub Star Moon スタックスタームーン
open 20:00 - close 4:00
TEL +81-55-263-2986
- Pub Night and Day ナイト&デー
open 20:00 - close 25:00
TEL +81-55-263-5695
- Izakaya Masa (Bar) 居酒屋 ます
open 18:00 - close 25:00
TEL +81-55-262-4915
- Sushi Botan 鮓 ぼたん
open 18:00 - close 23:00
TEL +81-55-262-6619

Prefectural Museum
Seasonal flowers bloom in the garden. A museum of history, people, nature, industries and culture of Yamanashi.

Shops open at night

- Restaurant Takaya
- Hoto Kosaku
- Furinkazan Hibiki-no-sato
- Local cuisine Yamasaku
- Country dishes Kakantai
- Chajumura Gonroku

Wherever Yamanashi Free Wi-Fi mark is indicated, free Wi-Fi is available. Refer to the site below regarding how to access.
https://www.yamanashi-kankou.jp/foreign/english/topics/wifi_info.html

In addition to the sightseeing information in Yamanashi Prefecture, the history and things to see are also explained. Refer to the site below.
<https://www.yamanashi-kankou.jp/english/index.html>

The FreeWi-Fi card is available at Isawa Onsen Station Tourist Information Office

Spring Day course for spring time

Cherry blossom viewing with Sakura sweets in hand

After buying Sakura sweets, I continued on for a while and came across a mansion where many dolls were displayed. After looking at a display on a traditional Japanese annual event of Hina Matsuri, I continued to walk along the avenue watching cherry blossoms and had a relaxing moment taking Ashiyu (footbath).

How about Sakura Sweets

- Confectionary Seigetsu**
open 9:00 - close 19:00 (Closed on January 1)
TEL +81-55-261-5555
<http://www.seigetsu.co.jp/>
- Kindaruma**
open 9:00 - close 18:00 (Open 7 days a week)
TEL +81-55-288-8900
<http://www.kindaruma.co.jp/>

Enjoy Hinamatsuri

- Hattake Shoin** Mid-February to early April
open 9:00 - close 16:00 (Closed on Tuesday, New Year)
TEL +81-55-261-6111
<https://www.city.fuefuki.yamanashi.jp/kanko/shsetsu.php?id=103>

After the cherry-blossom viewing please relax in the footbath

- Sakura Onsen Street**
- Isawa Gensen Ashiyu Hiroba (Footbath)**
open 10:00 - close 17:00 (Closed on Wednesday)
TEL +81-55-262-8131
The peak season when Cherry blossoms bloom is from late March to early April

Autumn Day course for fall time

Enjoy autumn having coffee and the grape cake.

- Sawataya Kura**
open 10:00 - close 19:30
TEL +81-55-262-2050
- Sugihara**
open 11:00 - close 20:00 (Closed on Sunday)
TEL +81-55-262-8182
- Cake House Misawa**
open 11:30 - close 20:00 (Closed on Wednesday)
TEL +81-55-262-2227
<http://www.cake330.com/>

Eat plenty of the ripe grapes you have harvested.

- Kogyokuen**
Season: Late August to early November
TEL +81-55-263-3300
- Toshoen**
Season: August to late October
TEL +81-55-326-3301
- Toyotamaen**
Season: Early August to early November
TEL +81-55-262-2448
<http://www.eps4.com/inkne.jp/~toyotama/>

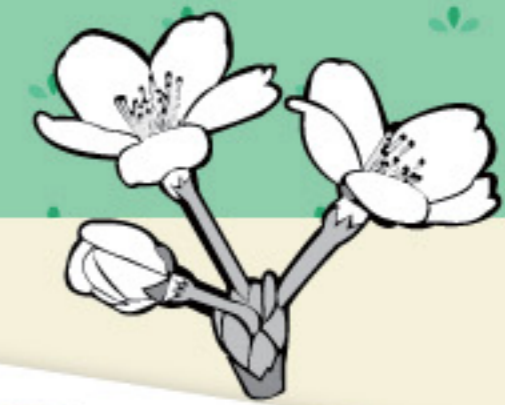
Let's find a wine that suits your taste.

- Mars Wine Honbo Shuzo**
open 8:30 - close 17:00 (Open 7 days a week)
TEL +81-55-262-1441 *Closed on December 31
<http://www.honbo.co.jp/factory/yamanashi.html>
- Monde Shuzo**
open 8:30 - close 17:00 (Open 7 days a week)
TEL +81-55-262-3161 *Closed on December 31
<http://www.mondewine.co.jp/factory.html>
*Juice is also available.

Day course for fall time
A luxurious day with wine and grapes

Now that you have enjoyed the cake made with Yamanashi grapes, how about going grape picking next? The grapes of Yamanashi are prolific and grow big and sweet. Then we can visit the wine cellar, where you can try varieties of Yamanashi wines. The large bottles of wine are available only in Yamanashi.

Sakura Onsen Street



Isawa Gensen Ashiyu Hiroba (Footbath)
石和温泉足湯ひろば

Autumn events in Ashiyu Hiroba



Forty-year-old cherry trees along the approximately 900 meter avenue are in full bloom, making the whole resort town look as if it were dyed in pink. Stroll along the wooden deck promenade in Yukata and take selfies with cherry blossoms. The trees are lit up at night during their blossoming season.



Isawa Gensen Ashiyu Hiroba (Footbath)

open 10:00~close 17:00 Closed on Wednesday
TEL +81-55-262-8131

This facility has three types of Ashiyu for visitors to enjoy. There are also facilities for wheel-chaired people that enable them to use Ashiyu while still on their wheelchairs. Guests at member hotels or Ryokans of Isawa Onsen Ryokan and Hotel Association are given free Ashiyu tickets. How about relieving your fatigue and relax?

Nouveau de Kanpai

Early November
Yamanashi Nouveau is a nouveau wine made with Kofu grapes and Berry A produced in Yamanashi Prefecture each year. Nouveau de Kanpai is a festival where Yamanashi residents and Isawa Onsen visitors count down until midnight and enjoy the just released fresh wine.

2 Spring and summer festival



Isawa Onsen Fireworks

August 21
Fuefuki city Summer Festival reaches its climax with fireworks. A variety of star mines light up the sky with various colors. The fireworks explode almost right above the spectators' seats, allowing you to feel as if you are under huge umbrellas with colorful illuminations.



Battle of Kawanakajima

Age of Civil Wars Picture Scroll
Late April
In this event, the "Battle of Kawanakajima" in the Age of Civil Wars is reproduced. Participants in armors experience the mock battle at the river bed of Fuefuki River in front of Fuefuki City Office. The mock battle develops following a story based on the historical facts on the "Battle of Kawanakajima", with participants splitting into the Takeda force and Uesugi force, fighting with each other. Participants are given an opportunity to take photos with warriors.



Isawa Ukai/ Fireworks on consecutive nights

From July 20 to August 19
Wednesday, Thursday, Saturday and Sunday
Kachiu, a unique seasonal attraction of the Isawa Onsen resort, is a way of cormorant fishermen controlling cormorants as they walking in the river rather than on a boat. Up to two people are invited to experience "Ukai"-fishing using cormorants.

Geisya



Hana Mikoshi

Early April
In the cherry blossom season, beautifully dressed Geisha carry Mikoshi, a portable shrine, parading through Sakura Onsen Street.

Isawa geigi

Please book at hotels or inns.
Geisha girls entertain customers with dance, singing and playing musical instruments.



Places where you can enjoy fruit picking



Strawberry Picking

From January to May

Please contact each farm.
Hayashi Ichigoen +81-55-262-4564
Isawa Ichigokan Aoyagi +81-55-262-3915

Pick your own strawberries and enjoy them. The perfectly matching sweetness and sourness create a rich flavor. Relax and enjoy the flavor of strawberries and the view of the extensive strawberry farm. How about visiting a strawberry farm with your partner, family or friends?



Peach Picking

From July to August

Please contact each farm.
Toyotamaen +81-55-262-2448

The peak of the peach season in Yamanashi, which boasts the largest amount of peach production, is around July to August. Have as much big, ripe peaches as you want. Some people in Yamanashi prefer not-so-ripe peaches. People outside Yamanashi visit the orchards to enjoy the expensive fruits.



Grape Picking

From July to September

Please contact each farm.
Toyotamaen +81-55-262-2448
Kogyokuen +81-55-263-3300
Toshoen +81-55-326-3301

Yamanashi grows a variety of grapes. Enjoy large and expensive Kyoho, Shine Muscat, which is now also popular abroad, and other Yamanashi grapes such as Koshu and Kaiji.

For more information... <http://www.isawaonsen.or.jp/fruit>



Rental cycle(yu-yu)

Map symbols



We repair some of the numerous bicycles left around JR Isawa Onsen Station and rent them for free.

- Isawa Onsen Station Tourist Information Office
(Open 7 days a week 9:00~17:00)
TEL +81-55-231-5500
 - Isawa Gensen Ashiyu Hiroba (Footbath)
(Closed on Wednesday 10:00~17:00)
TEL +81-55-262-8131
 - Fuefuki City Office
(Tourism, Commerce and Industry Department)
(Closed on Sunday 8:30~17:15)
TEL +81-55-262-4111
- Pay a deposit of 1000 yen when renting a bicycle.
(The deposit is refunded on returning the bicycle)



Taxi Telephone number

Map symbols

- Hinode kanko Taxi TEL +81-55-262-2131
- Isawa Taxi TEL +81-55-262-2277
- Isawa Kotsu TEL +81-55-262-3737
- Daiichi Kotsu TEL +81-55-262-2770
- Okabe Taxi TEL +81-55-262-3637
- Betsuden Taxi TEL +81-553-26-2633
- Tobu Kotsu TEL +81-553-47-1333
- Yuki Taxi TEL +81-55-262-3048
- Yatsushiro Taxi TEL +81-55-265-2115

Taxi ranks (stops) are also located at Isawa Onsen Station, Apita and AEON Isawa. Taxis may be booked at receptions at hotels and inns.

Hot spring inn/hotel Telephone number

Map symbols

- | | | | |
|--------------------------|---------------------|-------------------------------|---------------------|
| Hotel Hanaisawa | TEL +81-55-262-4166 | Hotel Ukai | TEL +81-55-263-1010 |
| Isawa Meitokan Itoyanagi | TEL +81-55-262-3141 | Hotel Haita | TEL +81-55-262-3101 |
| Ryokan Furinkaku | TEL +81-55-262-2917 | Kutsurogi-no-tei Kunitachi | TEL +81-55-263-2311 |
| Hotel Yamanami | TEL +81-55-262-5522 | Meiseki-no-yado Kagetsu | TEL +81-55-262-4526 |
| Kanpo-no-yado Isawa | TEL +81-55-262-3755 | Kizukuri-no-yado Kikori | TEL +81-55-262-3794 |
| Hanayagi-no-sho Keizan | TEL +81-55-262-2161 | Isawa View Hotel | TEL +81-55-262-4425 |
| Hotel Kohakuen | TEL +81-55-262-5890 | Hotel Fuji | TEL +81-55-262-4524 |
| Ryokan Miyukionsen | TEL +81-55-262-4126 | Hanayagi-no-sho Kaiji | TEL +81-55-262-7373 |
| Hotel Koshien | TEL +81-55-263-3211 | Hotel Kimiyoshi | TEL +81-55-262-3757 |
| Hotel Sekitei | TEL +81-55-262-4155 | Sekisuitei Ryokan Fuefukigawa | TEL +81-55-262-3545 |
| Hotel Sekifu | TEL +81-55-262-2151 | Isawa Tokiwa Hotel | TEL +81-55-262-6111 |
| Itoyanagi bekkon Wajoen | TEL +81-55-262-3181 | Ryokan Sensansou | TEL +81-55-262-2662 |
| Hotel Heian | TEL +81-55-263-5811 | Hotel Kakyo | TEL +81-55-263-4455 |
| Hotel Sengoku | TEL +81-55-262-1059 | Yomachi-no-sato Hanasuisho | TEL +81-55-262-2380 |
| Minamoto Ryokan | TEL +81-55-262-5576 | Hotel Shinko | TEL +81-55-263-0711 |
| Ryokan Kisen | TEL +81-55-262-2404 | | |
| Wafu Ryokan Mine | TEL +81-55-262-2677 | | |
| Fujinoya Yutei | TEL +81-55-262-2266 | | |



Tourist Information Office

Fuefuki City Tourism, Commerce and Industry Department
▶ <http://www.city.fuefuki.yamanashi.jp/kanko/>
Fuefuki City Society of Commerce and Industry
▶ <http://www.shokokai-yamanashi.or.jp/~fuefuki/>
Isawa Onsen Tourism Association
▶ <http://www.isawa-kankou.org/>
Isawa Onsen Ryokan and Hotel Association
▶ <http://www.isawaonsen.or.jp/>

Yamanashi Prefecture International Affairs Division
1-6-1Marunouchi,Kofu City 400-8501 phon +81-55-223-1620 <http://www.pref.yamanashi.jp>
Isawa Onsen Ryokan and Hotel Association
822 Ichibe Isawa,Fuefuki City 406-0031 <http://www.isawaonsen.or.jp/>

Isawa Onsen access information

