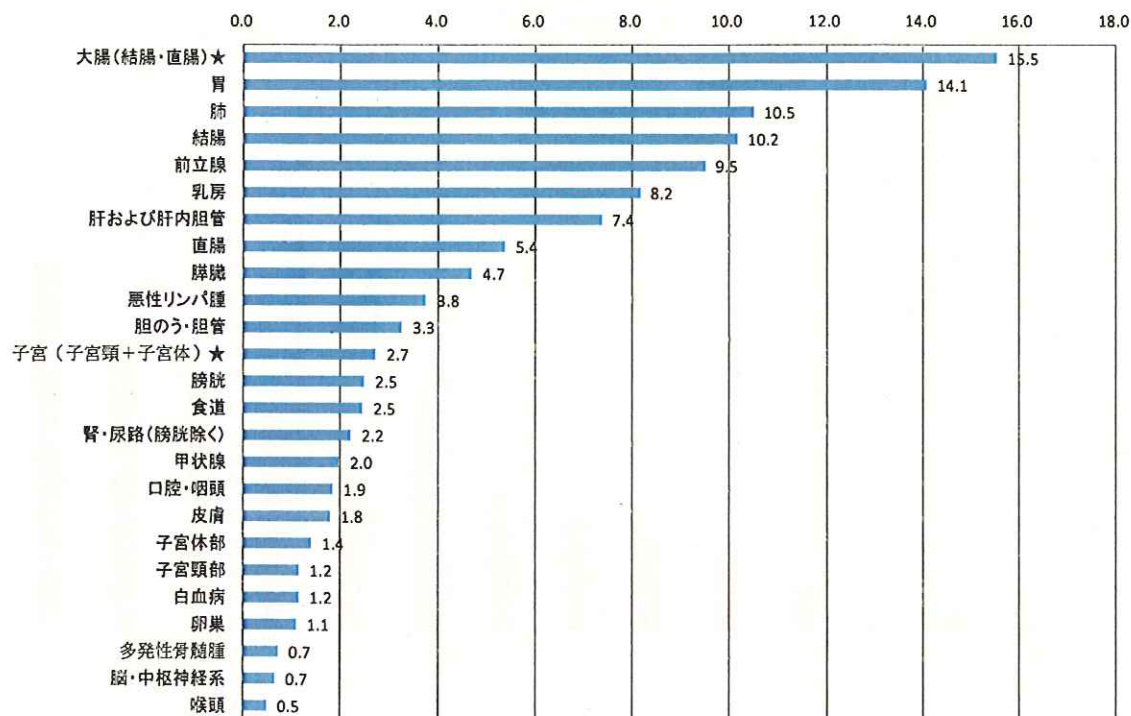
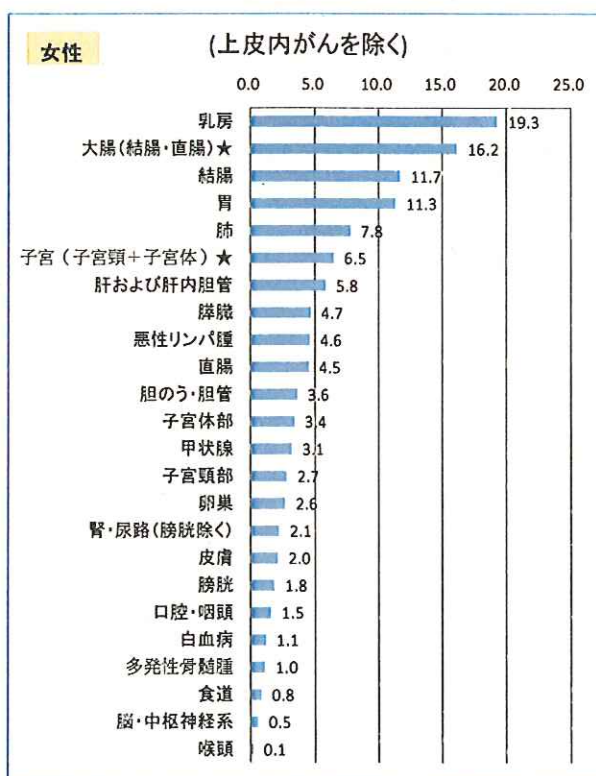
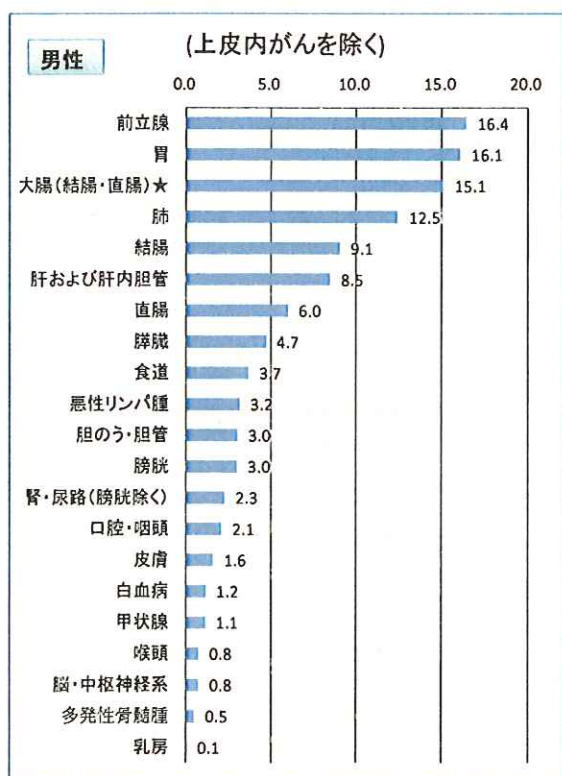


(6) 罹患割合(%)・全体

(上皮内がんを除く)

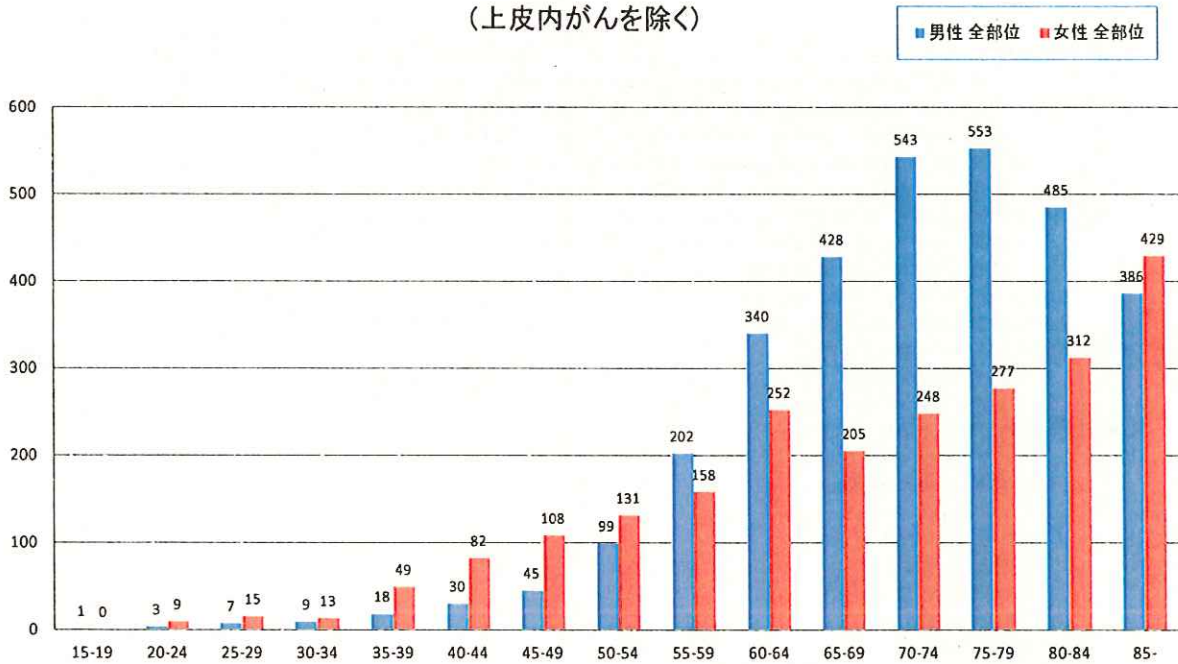


(7) 罹患割合・男女別(%)

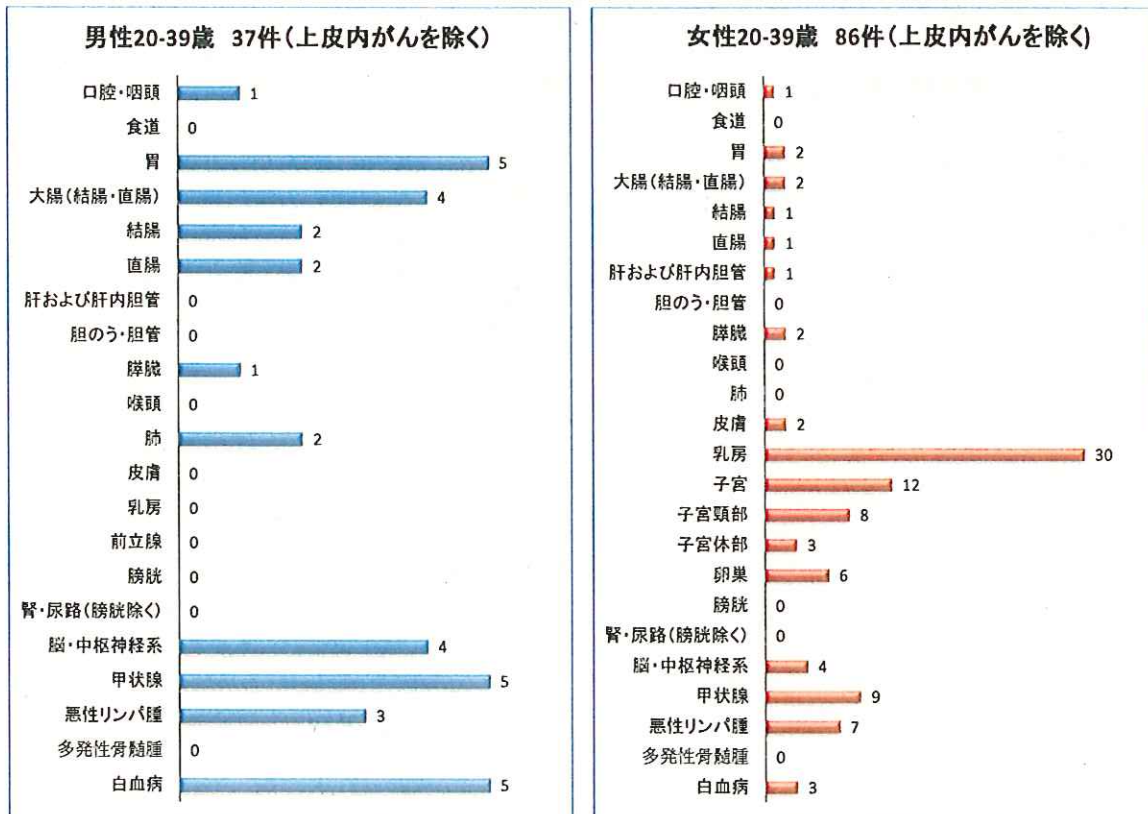


(8) 年齢階級別・男女別罹患数(件)

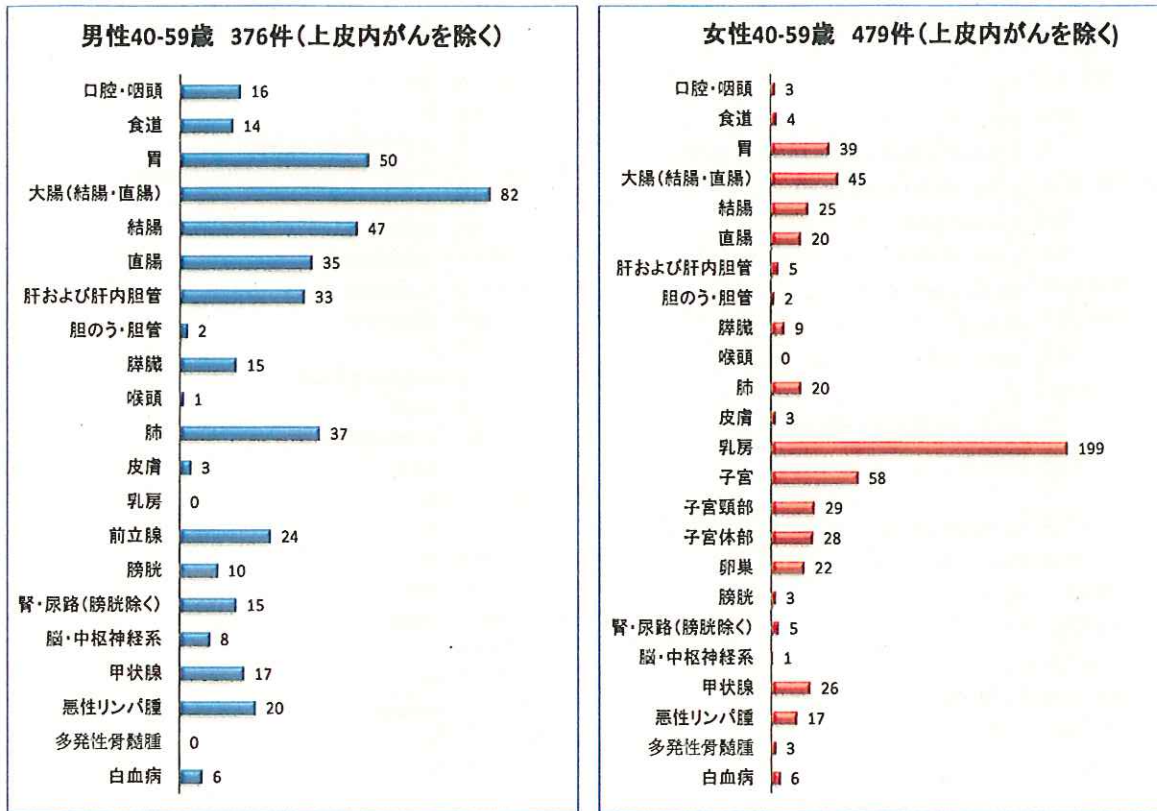
(上皮内がんを除く)



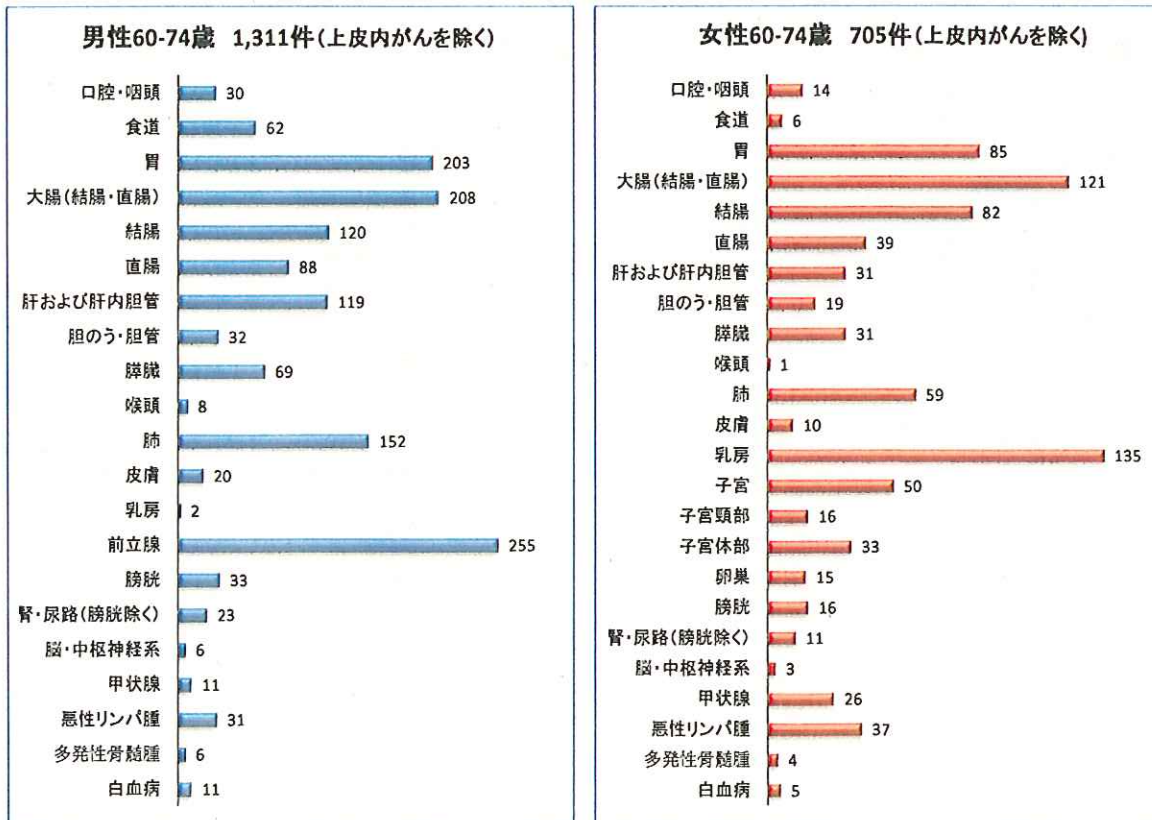
(9) - 1 年齢別・部位別罹患数 / 20歳~39歳(件)



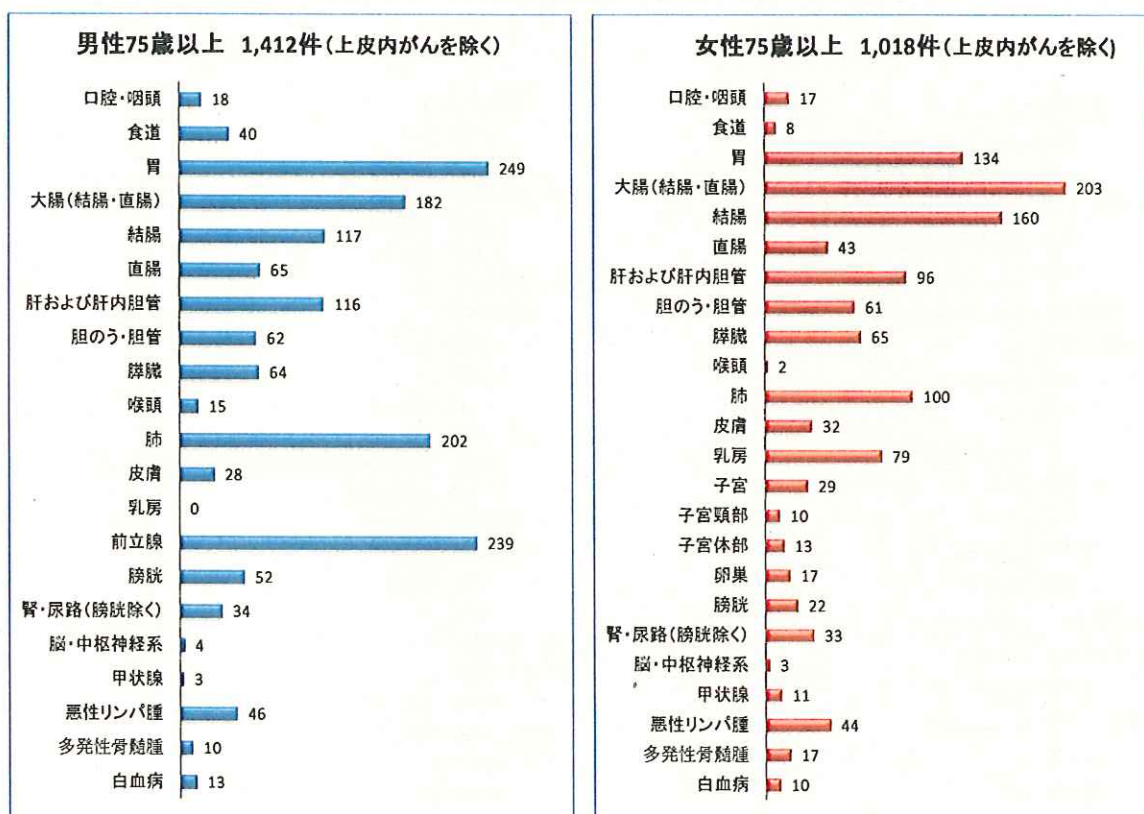
(9) - 2 年齢別・部位別罹患数 / 40歳～59歳(件)



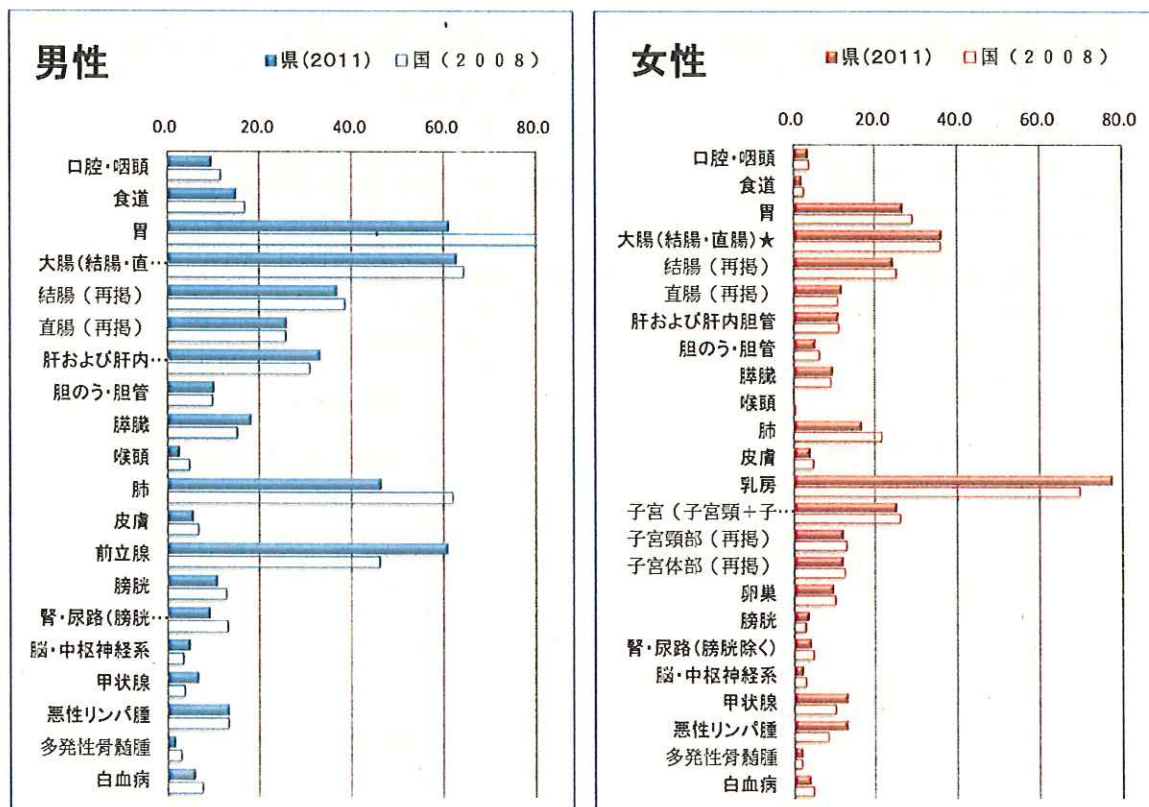
(9) - 3 年齢別・部位別罹患数 / 60歳～74歳(件)



(9) - 4 年齢別・部位別罹患数 / 75歳以上(件)

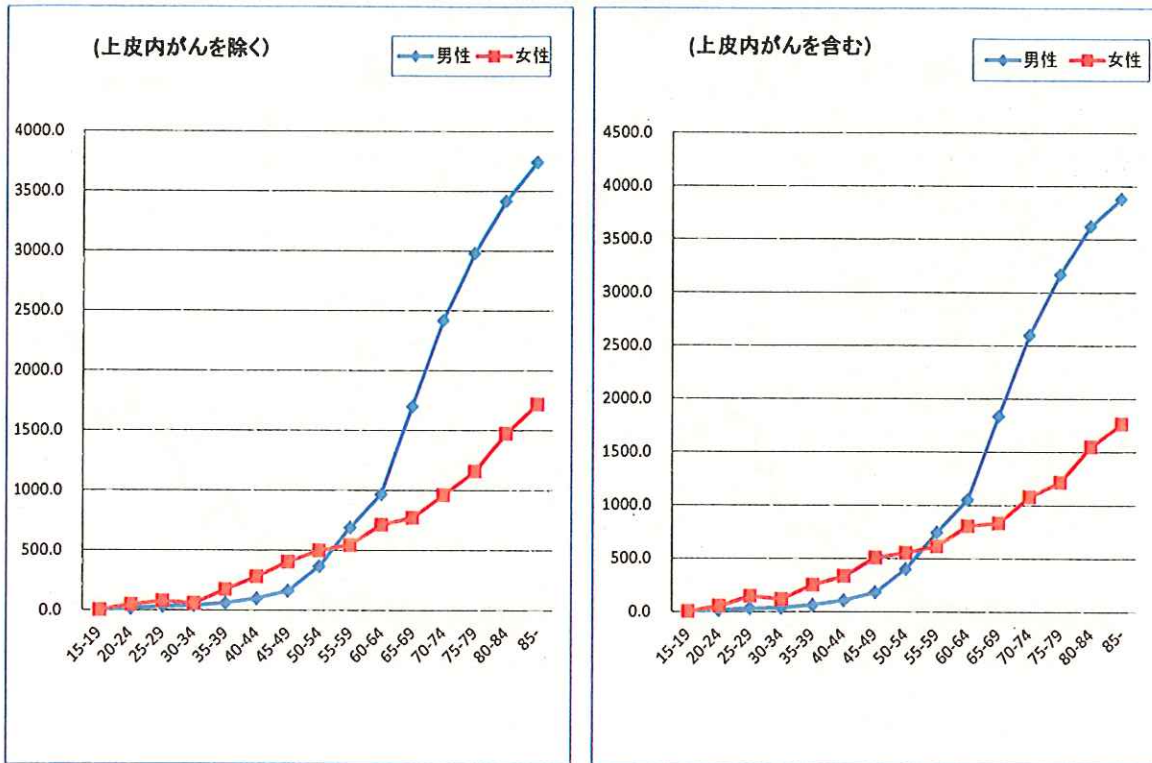


(10) 部位別年齢調整罹患率比較(上皮内がんを除く)(%)



(11) - 1 部位別年齢階級別罹患率(人口10万対)

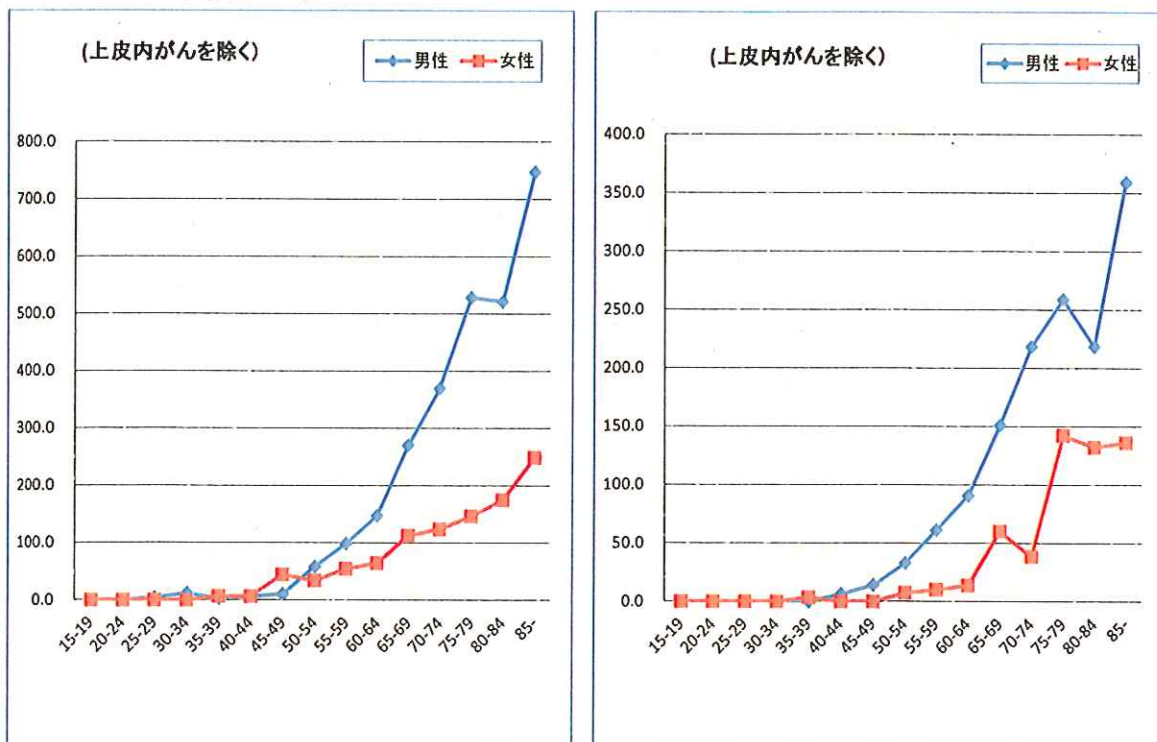
全部位



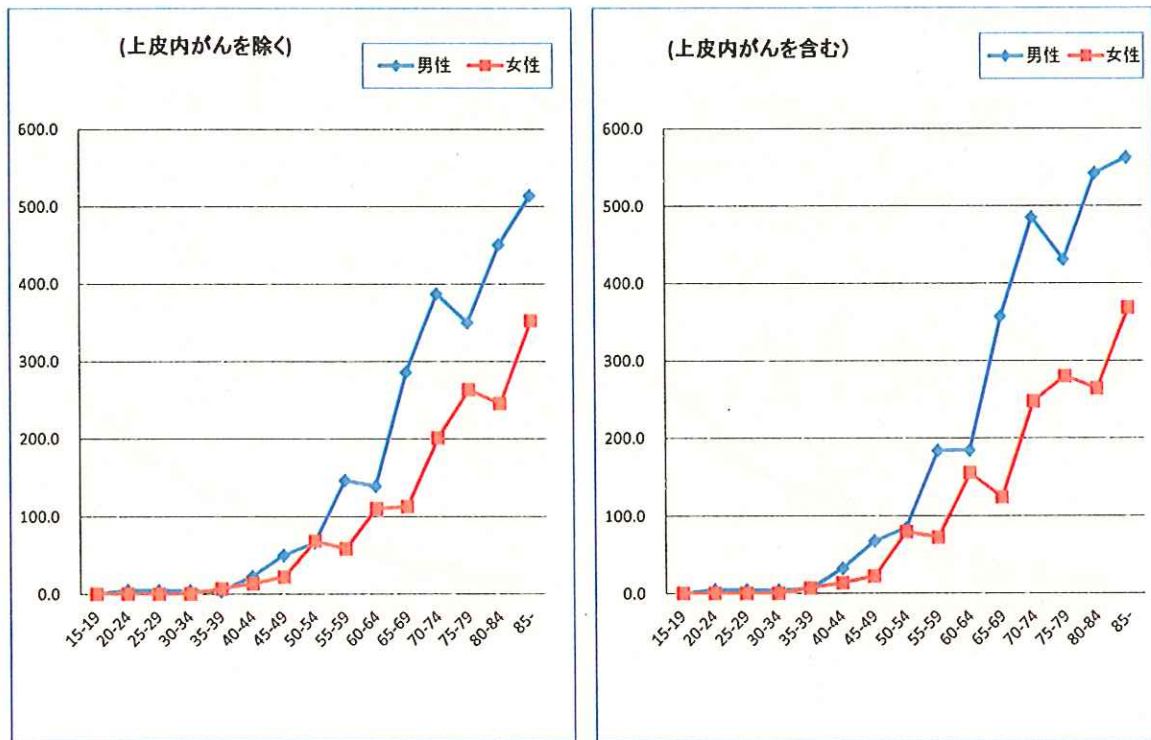
(11) - 2 部位別年齢階級別罹患率(人口10万対)

胃がん

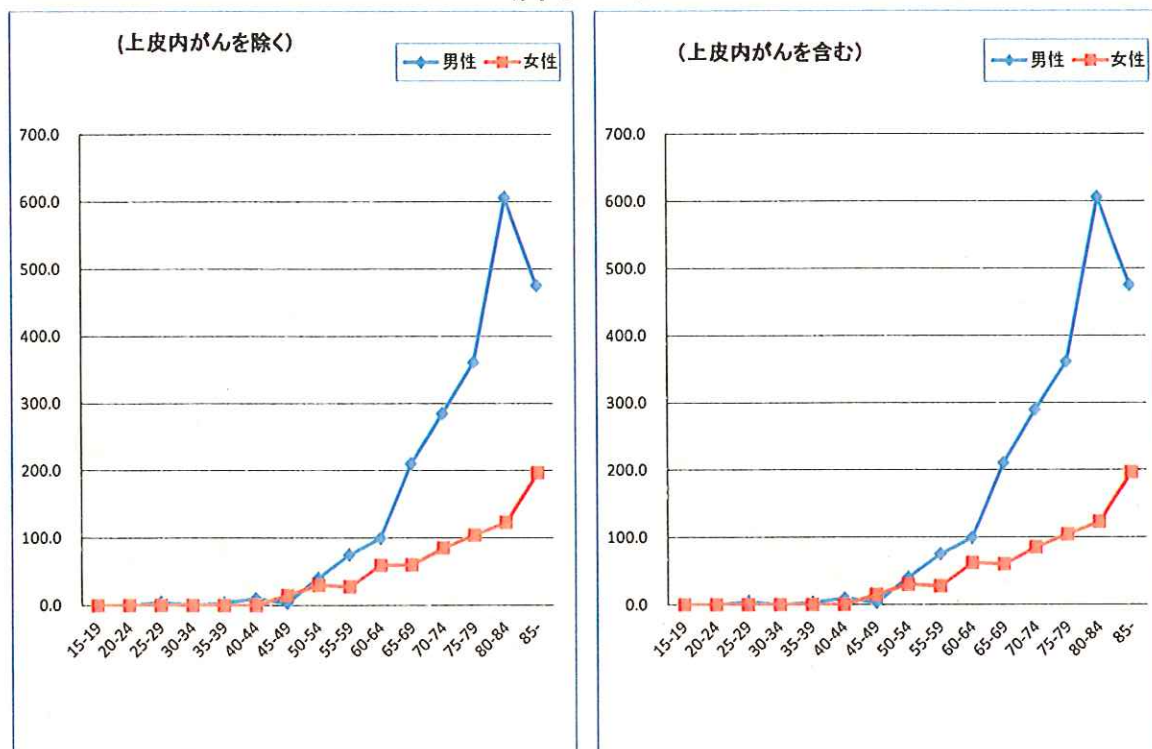
肝がん



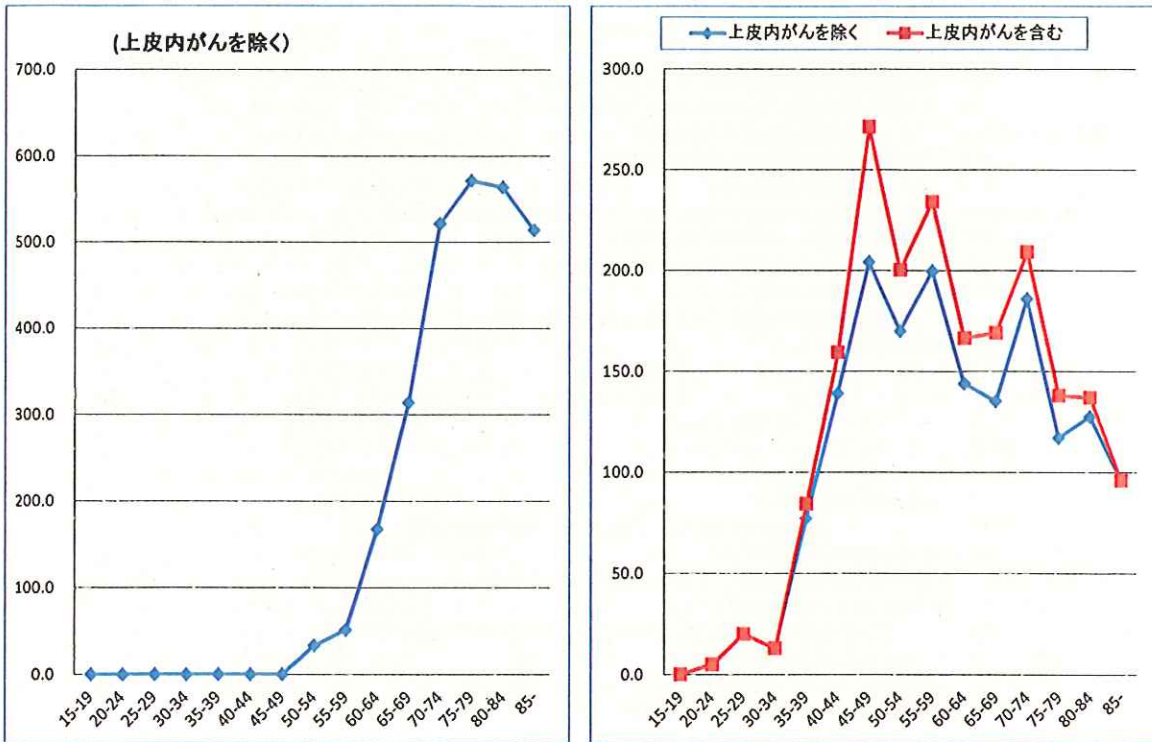
(11) - 3 部位別年齢階級別罹患率(人口10万対)
大腸(結腸・直腸)がん



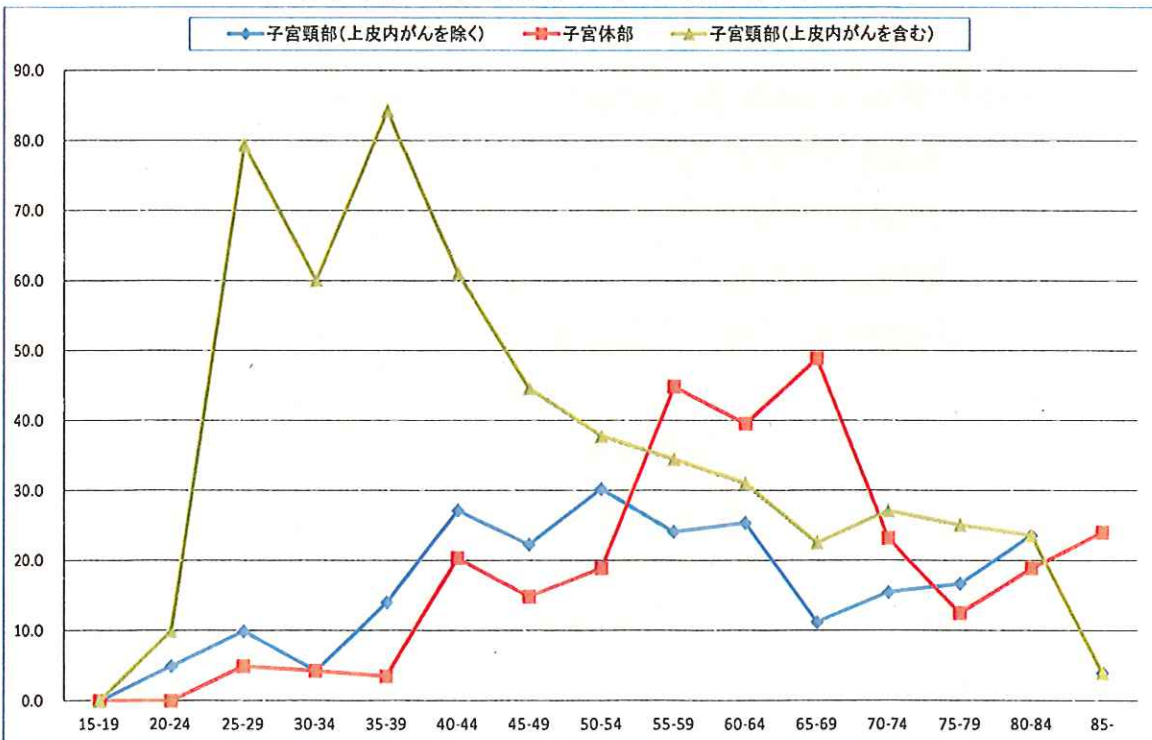
(11) - 4 部位別年齢階級別罹患率(人口10万対)
肺がん



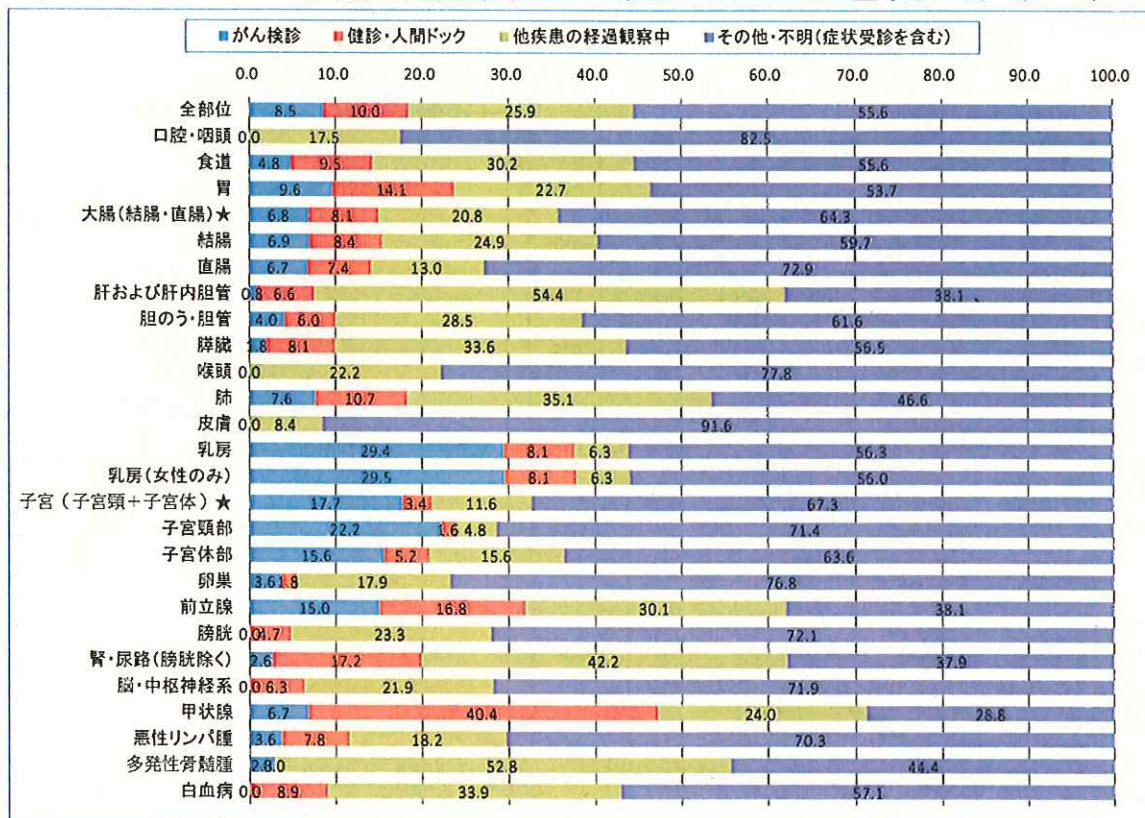
(11)－5 部位別年齢階級別罹患率(人口10万対)
前立腺がん 乳がん



(11)－6 部位別年齢階級別罹患率(人口10万対)
子宮(子宮頸部・子宮体部)がん



(12) - 1 発見経緯(上皮内がんを除く)(%)



(12) - 2 発見経緯(上皮内がんを含む)(%)

