

New restrictions put in place on the (Yamanashi)Mt. Fuji Yoshida Trail from 2024 onwards!

Access restrictions will be imposed to prevent overcrowding and to ensure climbers do not ascend without taking proper rest.

⚠️ 4PM ⌚ ▶ ⌚ 3AM

Restricted Access: the gates at the fifth station will be closed from 4pm until 3am.

⚠️ Max. 4,000 people/per day

Restrictions will be imposed if the number of climbers exceeds 4,000.



Those with mountain hut reservations may pass through the gate during restricted hours.

※However, as a general rule, please pass through the gate before 4pm.

Introduction to the New Fees

Hiking Fee

(Facility Usage)



Yamanashi
Prefecture Mt. Fuji
Yoshida trail gate
entrance reservation
system

2,000 yen/per person each time

Please pay accordingly to the new regulations. Payment can be made on the day or paid in advance on the Yamanashi Yoshida trail gate entrance reservation system.

+

Donation

Optional

1,000 yen/per person

We greatly appreciate voluntary donations, as we have in the past for the conservation of Mt. Fuji.

For further information on the regulations and climbing Mt. Fuji, please visit the official website.



Yamanashi Prefectural Government

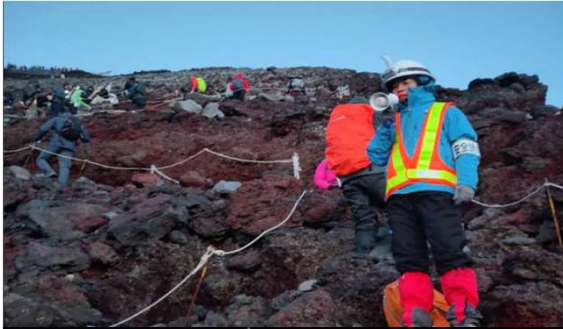
Purpose of Fees

Hiking Fee

2,000yen/per person each time

What is the purpose of the hiking fee?

Safety and Conduct



Support for foreigners (interpretation)



- Maintenance expenses (gate maintenance and operational fees).
- Managing the local emergency contact point at the information centre.
- Disaster response and discovery services.
- Trail management and maintenance.

Donation

Optional

1,000yen/per person

What is the purpose of the donation?

Operation of first aid stations.



Operation of portable toilets.



- Operation of a safety support information centre at the 6th station.
- Support for the local disaster prevention organisations.
- Prevention of invasive species.

+