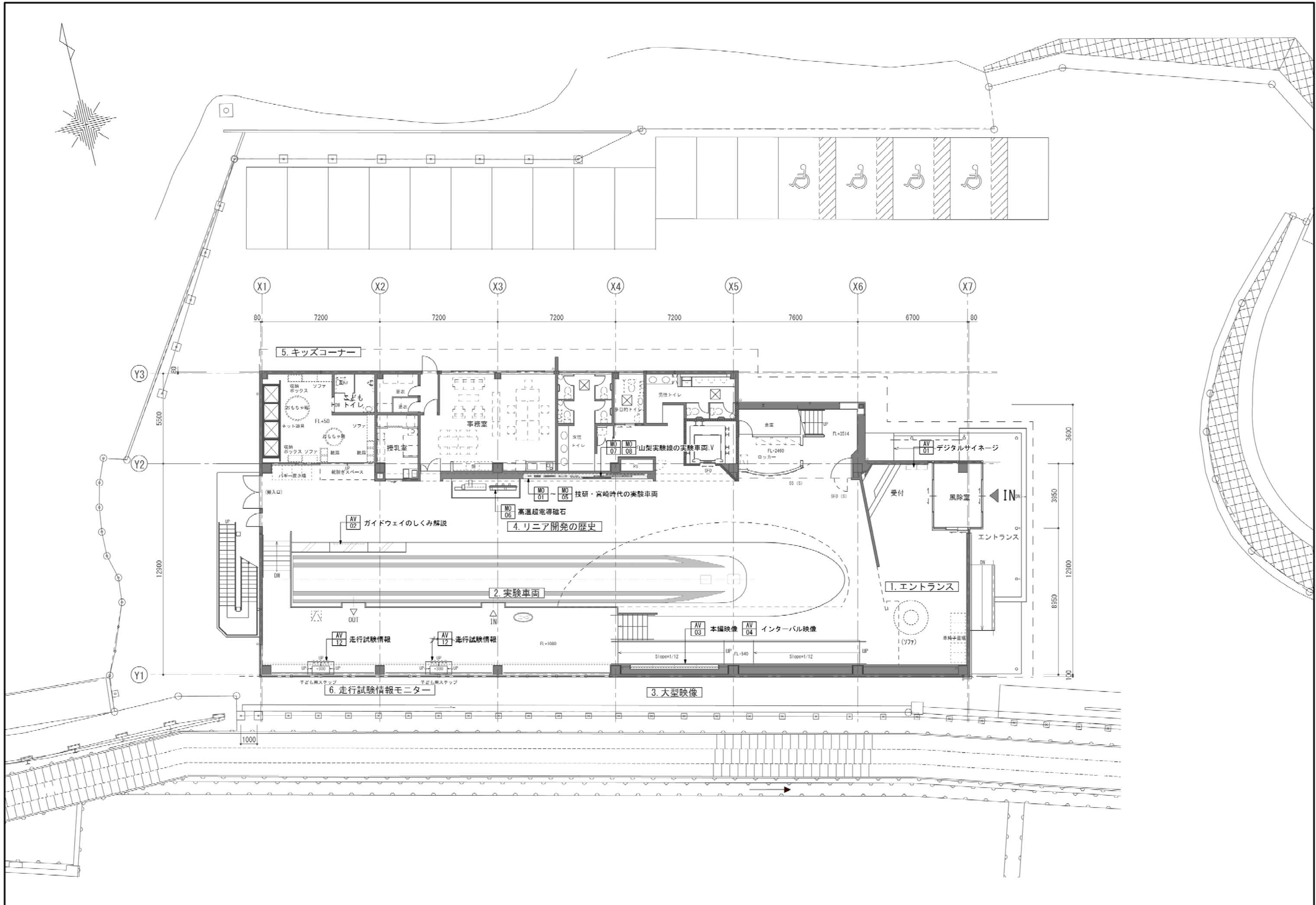
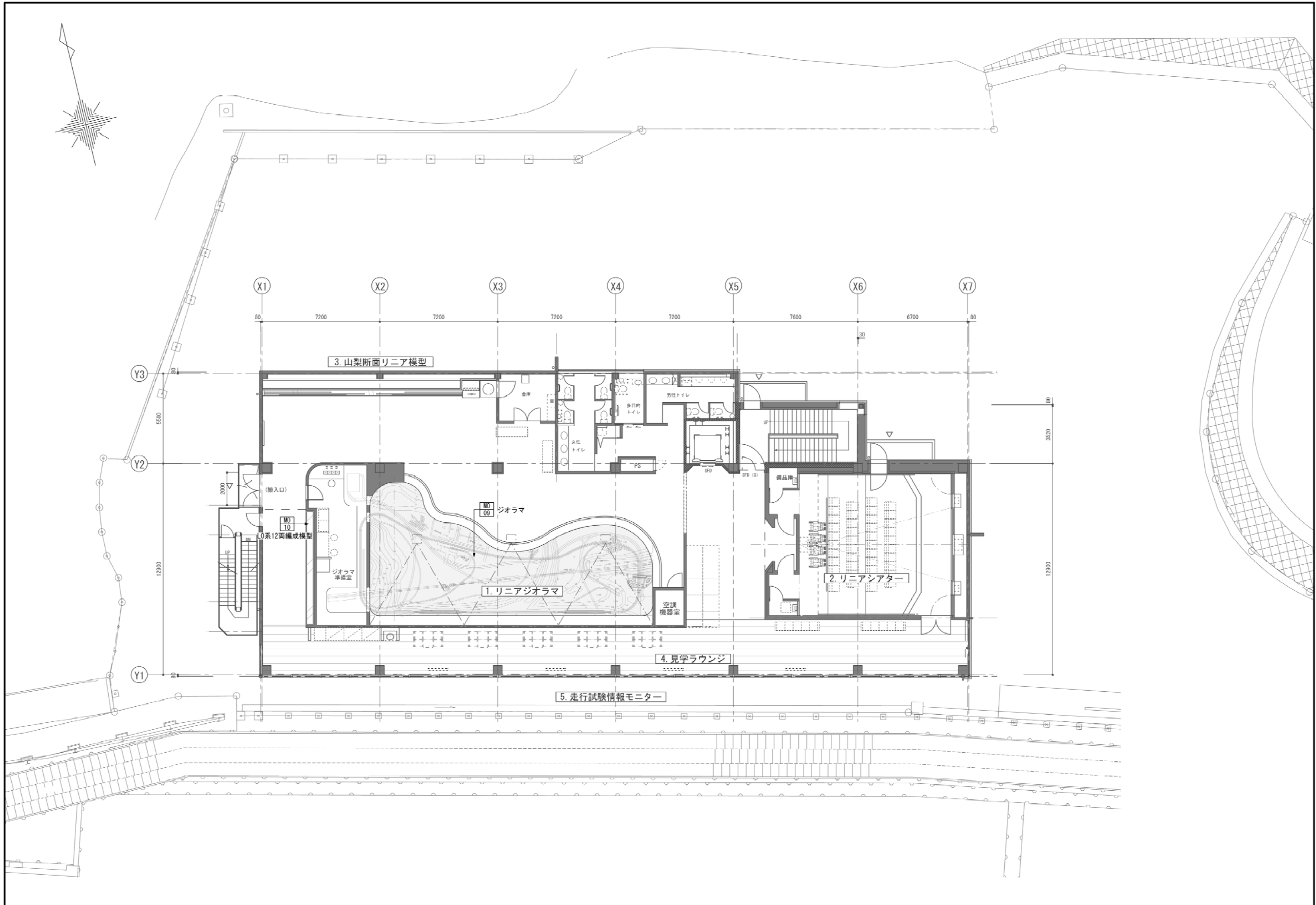
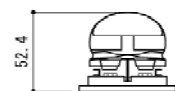
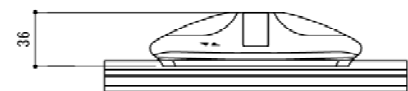
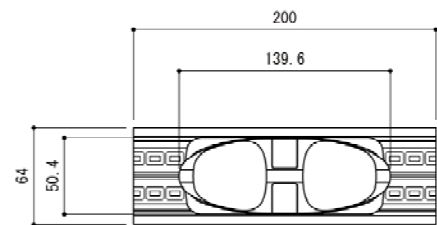


模型造形図

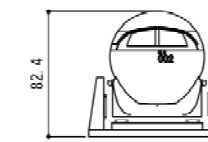
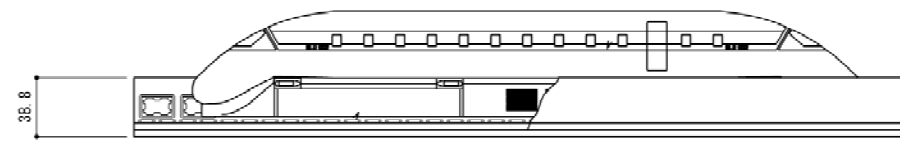
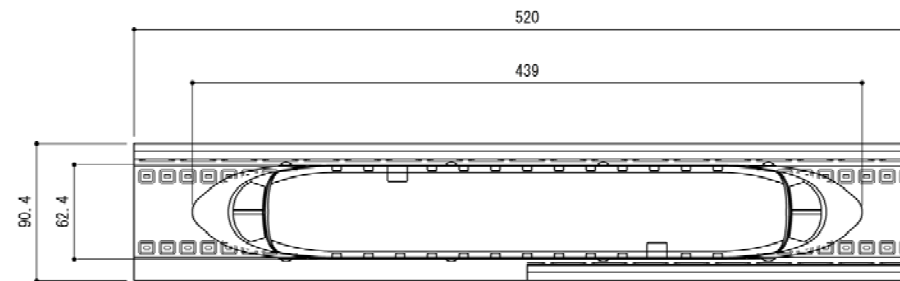




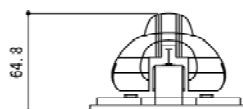
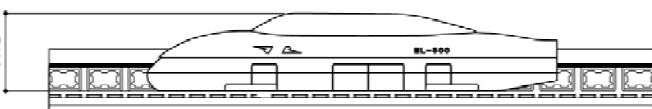
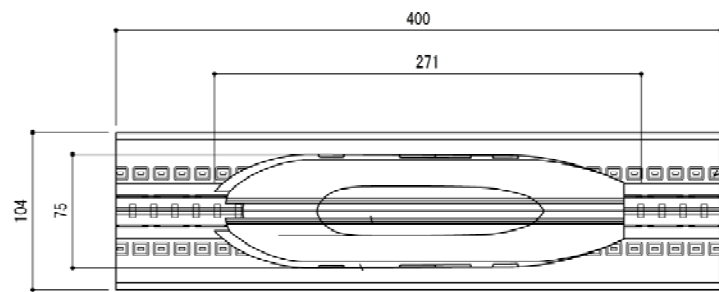
MO 01 ML100



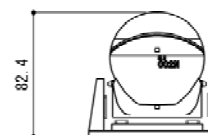
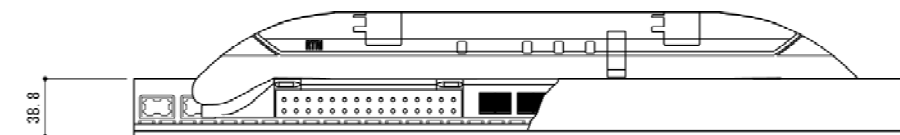
MO 04 MLU002



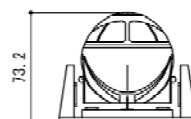
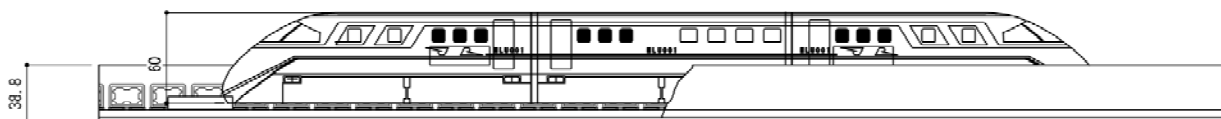
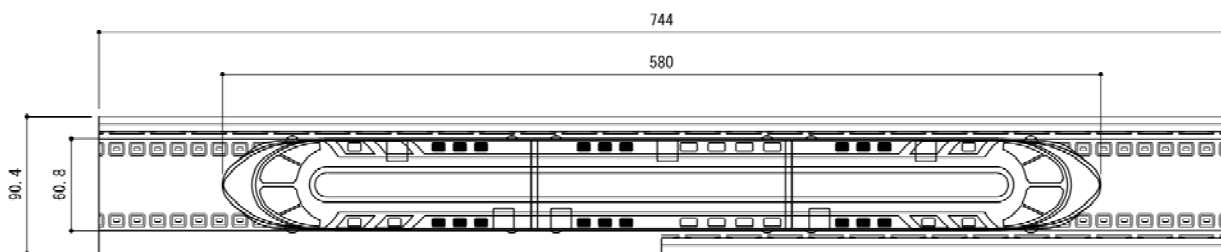
MO 02 ML500



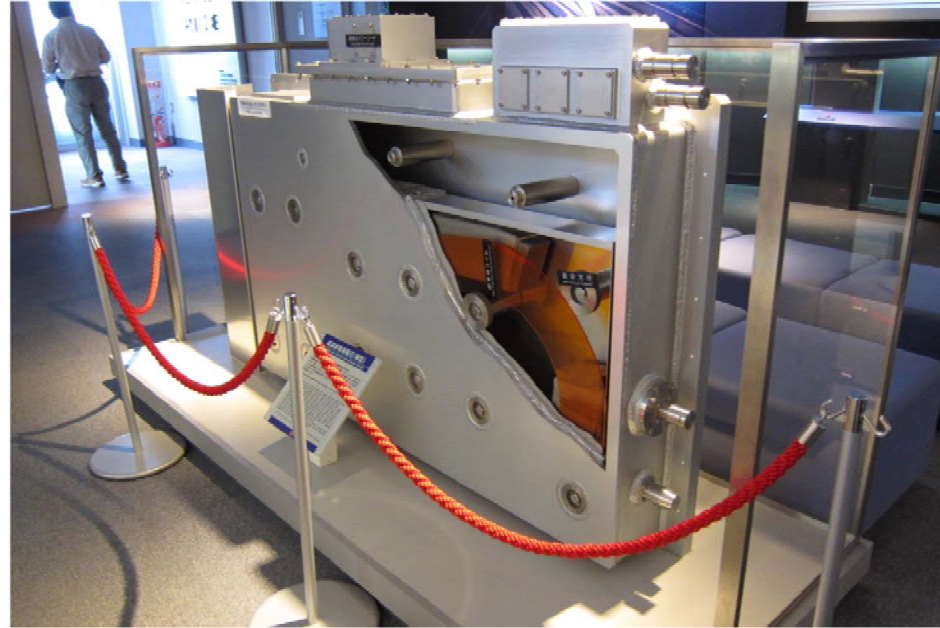
MO 05 MLU002N



MO 03 MLU001

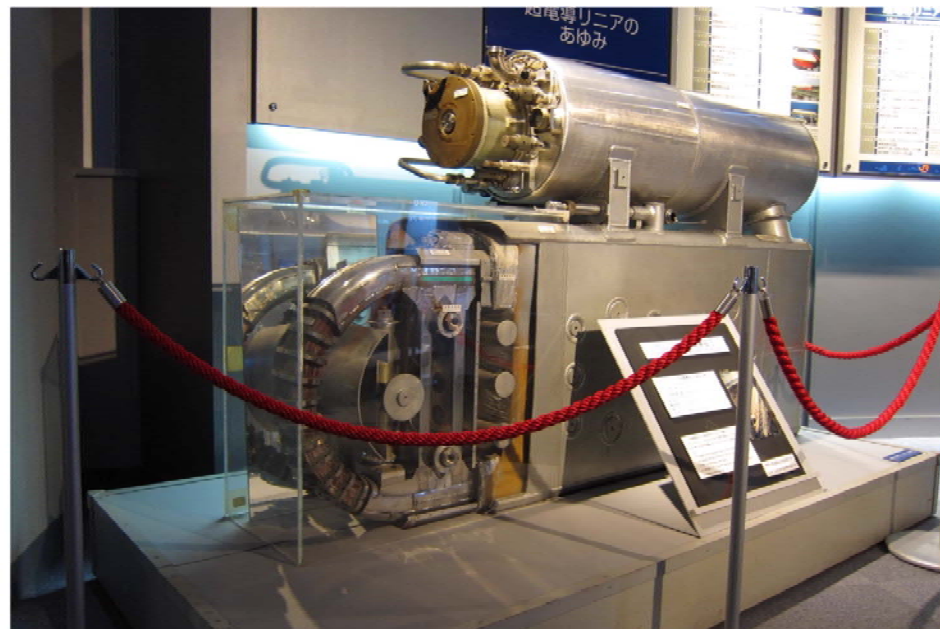


技研・宮崎時代の実験車両 スケール：1/50
 共通仕様：エポキシ樹脂加工 ラッカー塗装仕上げ
 各1台



高温超電導磁石 (既存模型)

既存館より移設



高温超電導磁石 (実物)

既存館より移設



・1997～2002年の実験車両
・4両編成と3両編成の2編成

既存館より移設